

## **Wimax 3500-3700 MHz Fiberglass Omni Antenna**

### **Part No:AC-Q36F06**

#### **1. Introduction**

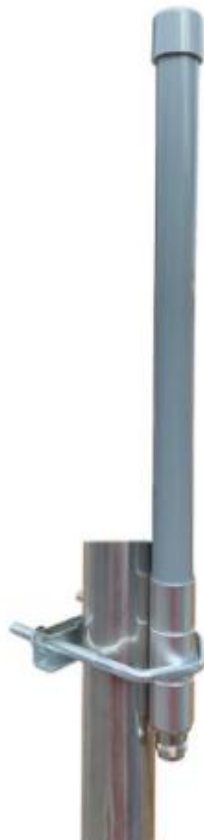
This fiberglass Omni antenna is ideal for 3.8G WiMax . Worldwide Interoperability for Microwave Access, also known as IEEE 802.16, that is intended for wireless "metropolitan area networks".

WiMAX can provide broadband wireless access (BWA) up to 30 miles (50 km) for fixed stations 802.16d, and 3 - 10 miles (5 - 15 km) for mobile stations 802.16e.

It is good work in long range BWA applications for various applications including SCADA/M2M, Video Surveillance Backhaul, Data Network Backhaul & Network Bridging Solutions.

The 802.16d fixed WiMAX standard has proven to be a stable and reliable wireless alternative for both private and public networks to traditional transport technologies such as DSL,Cable,or T-1 lines.

This Full Band Fiberglass antenna is an omni-directional antenna that gathers signals from all sides and does not need to be pointed toward a cellular tower. Parts includes mounting equipment for either a flat horizontal surface or a wall.It shall be mounted in an upright position for best results.



## 2. Specification

### Electrical

Frequency Range	3500-3700MHz
Gain	6dBi
V.S.W.R	≤1.5
Radiation	Omni-Direction
Horizontal Beam width	360°
Vertical Beam width	28°
Polarization	Vertical
Lightning Protection	DC Grounded
Maximum Input Power	100W
Impedance	50Ω
Connector	N Female
Antenna Radome Material	Fiberglass
Mounting way	Pole Mount
Diameter of Installation Pole	Ø30~Ø50mm

### Mechanical

Dimensions	Φ20x300mm
Weight	180g
Operating Temperature	-40℃ to+70℃
Rated Wind Velocity	60m/s
RoHS Compliant	YES