

GSM Yagi Antenna With 12 Element Models

Part No:AC-D90Y14-12

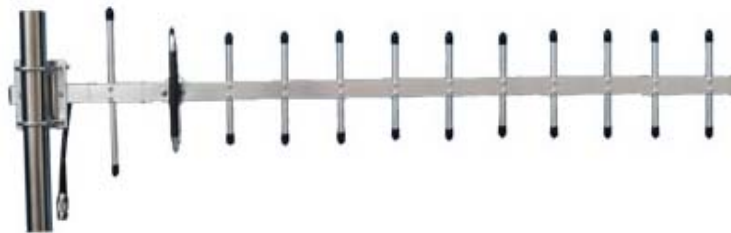
1. Introduction

A yagi antenna is a specific type of directional antenna, which means that it sends and receives a signal from primarily one direction. A good way to visualize this is by thinking of a flashlight.

The light from a flashlight shines in a narrow beam, only in the direction that it's pointed.

If you shine a flashlight on something close, it illuminates a small area, but if you shine it on something further away, the illuminated area is larger.

In this same way, a yagi antenna transmits and receives radio signals from a single direction and the farther away the signal gets, the wider the beam becomes.



2. Specification

Electrical

Frequency Range	824-960MHz
F/B Ratio	> 18dB
Gain	14dBi
V.S.W.R	≤1.5
Radiation	Direction
Horizontal Beam width	36°
Vertical Beam width	32°
Polarization	Vertical
Lightning Protection	DC-Grounded
Maximum Input Power	50W
Impedance	50Ω
Connector	N Female
Cable Type	RG58U
Cable Length	30CM
Antenna Radome Material	Aluminum alloy
Mounting way	Pole Mount
Diameter of Installation Pole	Ø30~Ø50 mm

Mechanical

Dimensions	950×185×55mm
Weight	500g
Operating Temperature	-40°C to+70°C
Rated Wind Velocity	60m/s
RoHS Compliant	YES