

## 3G 12dBi High Gain Yagi Antenna With SMA Type Connector

**Part No:AC-D8021Y12-12**

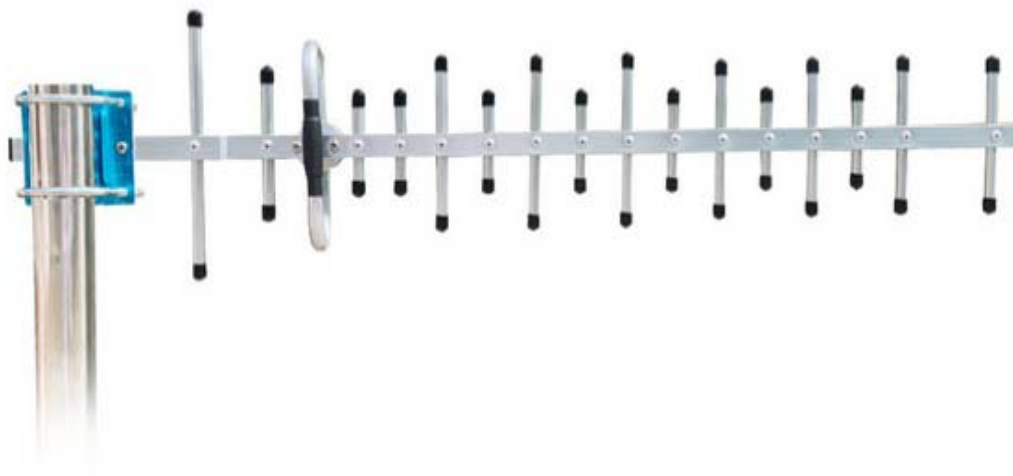
### 1. Introduction

The 3G YAGI antenna is designed for use in GSM/GPRS/DCS/UMTS systems working in 800-2170Mhz.

AC-D8021Y12-12 series light aluminium alloy duty Yagi are factory assembled and adjusted for easy installation.

They feature light-wall tubing elements and machined aluminum blocks for the boom-to-element junctions.

Twelve element models are available.Economical,light weight installation and good performance.



## 2. Specification

### Electrical

Frequency Range	806-960/1710-2170MHz
F/B Ratio	> 18dB
Gain	12dBi
V.S.W.R	≤1.8,Max2.5
Radiation	Direction
Horizontal Beam width	30°
Vertical Beam width	30°
Polarization	Vertical
Lightning Protection	DC Grounded
Maximum Input Power	50W
Impedance	50Ω
Connector	SMA MALE
Cable Type	RG58U
Cable Length	5M
Antenna Radome Material	Aluminum Alloy
Mounting way	Pole Mount
Diameter of Installation Pole	Ø30~Ø50 mm

### Mechanical

Dimensions	850x185x55mm
Weight	680g
Operating Temperature	-40°C to+80°C
RoHS Compliant	YES