

## **4G/LTE 650-830MHz 14dBi Yagi Antenna With 12 Elements**

**Port No:AC-D700Y14-12**

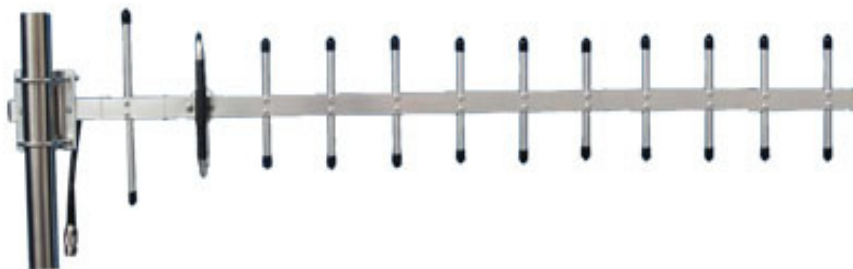
### **1. Introduction**

Yagi antennas are typically very directional and are used for point to point, or to extend the range of a point to multi-point system.

Our AC-D700Y14-12 antenna offers an extremely wide frequency range, high gain and Aluminum material.

Applications include 4G, 3G, LTE, PCS, DCS, AWS, IMT, WCDMA, and cellular.

This antenna has an excellent front to back ratio to block unwanted signals and provides outstanding corrosion resistance and longevity in the harshest environments.



## Electrical

Frequency Range	650-830 MHz
F/B Ratio	> 18dB
Gain	14dBi
V.S.W.R	≤1.5
Radiation	Direction
Horizontal Beam width	40°
Vertical Beam width	32°
Polarization	Vertical or Horizontal
Lightning Protection	DC Grounded
Maximum Input Power	100W
Impedance	50Ω
Connector	N Female or customized
Cable Type	RG58U
Cable Length	30cm
Antenna Radome Material	Aluminum Alloy
Mount way	Pole
Diameter of Installation Pole	Ø30~Ø50mm

## Mechanical

Dimensions	1200x230x45mm
Weight	900g
Operating Temperature	-40°C to+70°C
Rated Wind Velocity	60m/s
RoHS Compliant	YES